

Heartbeet Lifesharing

- A Camphill Community -

Newsletter

www.heartbeet.org

FALL 2016 • Heartbeet Lifesharing • A Camphill Community • 218 Town Farm Rd • Hardwick, VT 05843

~Welcome to the Heartbeet Community Center~



The doors are open...



... the Hall is full!

Dear New and Old Friends of Heartbeet,

There is so much to celebrate and be grateful for at this moment in Heartbeet's history! We have had an exceptionally beautiful and extended autumn this year, with brilliant colors of red, orange, and gold covering the hillsides; and warm days of perfect weather to go with it! With the move to the new property in Craftsbury and the completion of the Heartbeet Community Center, welcoming and integrating new Friends and families, this summer and fall have felt blessed but busy beyond comfort—we are grateful for the abundance and yet long to catch our breath!

So what's new since our last newsletter? The Heartbeet Community Center is built! The Gilbert-Schwartz family along with Annie, Chris and Brielle has moved to Heartbeet Hill in Craftsbury (along with our new coworkers Ver and Derek). Kaspar House is no longer the host of the office space for the community—the administrative offices as well as the financial office are moved to the new building. Tireless landscaping teams worked throughout the summer to plant trees and bushes, shrubs and perennials—thank you to Stuart LaPoint and his team for their help with the big trees and envisioning! The garden was run and cared for by our very own Anna and Dave, who are staying as our ongoing gardeners! The farm was a ruckus this summer with the sounds of chickens, turkeys, pigs, cows, goats and farmers. With great community effort lots

of hay was loaded into our haylofts to get our beautiful animals through the long winter that is fast approaching.

My heart is filled with gratitude for this Community Center that stands as a representative for inclusion, ready to be filled with activity. Thank you to everyone who has supported this endeavor over the years; this building carries an impulse to make the world of the arts accessible to all as we collectively strive to solve major social and cultural issues. Our wish is that this space host conversations enabling people from all walks of life to feel the reality of community as a home where all voices are important: to play, to sing, and rejoice in all that life brings.

On October 21st we celebrated the Grand Opening of the Heartbeet Community Center, and the flood gates opened with maximum participation! The hall was filled shoulder to shoulder all the way into the lobby. There was great food from the Craftsbury General Store and Woodbelly Pizza, along with contributions from Pete's Greens, Champlain Orchards, and Cellars at Jasper Hill. There were performances from the Hazen Union marching band and drama club, as well as the Heartbeet Chime Choir, and we heard beautiful music from the Me2 Orchestra, *the world's only classical music organization created for individuals with mental illness and the people who support them*. The Grand Opening was just a first taste of the incredible magic that this building is capable of—thank you to everyone who attended and contributed to making the day a wild success!



The Heartbeet Chime Choir perform at the Grand Opening of the Community Center.

Just prior to the Grand Opening Celebration Heartbeet was honored to host David Newbatt, an amazing world-recognized artist who gifted his time to the Heartbeet Community Center. David painted our walls with beautiful murals that go a long way toward warming the building, yet there are still items needed to remove the feeling of new bare space, and to finish making the building capable of serving its potential. The library needs shelving, tables, and yes—even books! The kitchen needs pots, pans, shelves and all the accoutrements that will make it usable for both food processing and baking. The flex spaces need chairs, tables, and shelving; and then there is the need for furniture in the lobby and entrances—coat racks and shoe shelves. We are so close, and still need all your support to raise the last \$25,000!

Please help us reach our goal by the end of this year! A huge thank you to everyone who has gotten us this far—we can truly celebrate this mutual achievement: a place for people to gather that celebrates differences and honors the individual!

With deeply felt gratitude,

Hannah Schwartz



Caliburn House, Lelia and Annie V. at Craftsbury Old Home Day



Garden Crew pulling up the garlic!



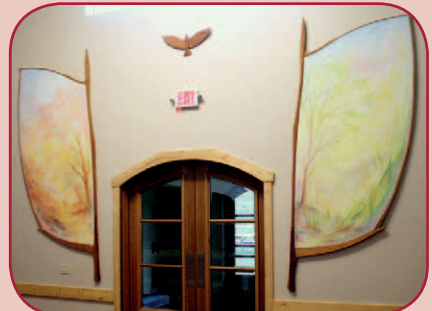
Brielle and Kelly



Jasper and Thomas - Fall fun!

Photo by Karen Gowen

David Newbatt: Bringing Beauty to the Hall



Heartbeet would like to thank artist David Newbatt, who came from Scotland and adorned the walls of the Community Center with beautiful murals.

Community Life



Sara and David with Jessie and Tony in Switzerland!



Brielle, Julia and Lara share a laugh



Brittany and Dan



Anna, Dave, Linden, Thomas and Sam at Heartbeet Hill



Nelly and Ismael



Jemma, August, and Alden - Out on the town!

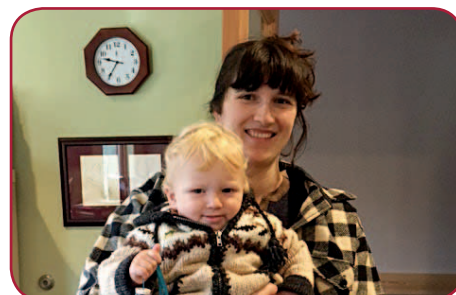


Jon & Sequoia planting trees

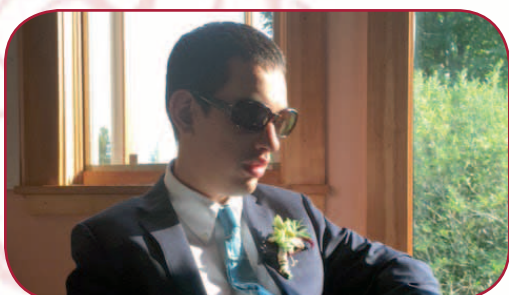


Lelia, Lindsey, April and Kei in felting

Photo by Karen Gowen



Marci and Linden



Max - Playing it cool



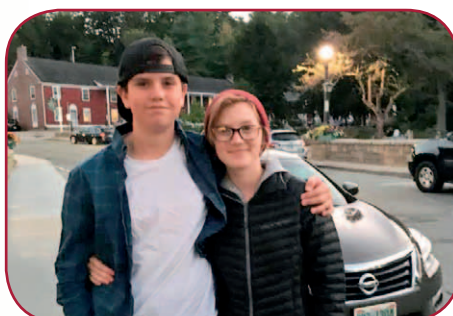
Ann B. and Alden



Parker and Laura landscaping



Sean - Enjoying the sunshine



Wilde and Lyla at High Mowing School



Thomas, Isaac, Joseph, and Emilie

The Community

The Heartbeet Community Center has become a reality! On October 21st, 2016 the Heartbeet Community Center opened its doors for the first time, and welcomed in our extended community. The construction portion of this project has been completed, thanks to the generosity of many individuals who stepped forward to make a gift toward this dream of an inclusive community center in Hardwick—what a journey this has been!

As we look to the future and sustainability of this space we are finding ways to be sure that the Heartbeet Community Center is fully stocked with the fixtures, furniture, and equipment it will need to carry our mission of inclusion into the future. Our doors are open – we did this together! We now turn to you in order to make this building a vibrant community hub—kitchen, bakery, library, and hall are in need of the amenities that will make this space usable and sustainable. Look through the following pages and see how you can make a difference in furnishing this Hall!

Ways YOU can give!

Online

- www.networkforgood.org
- www.gofundme.com/CommunityAtHeart

By Mail

Attn: Development
218 Town Farm Road
Hardwick, VT 05843

Material Donations

We welcome material donations of equipment, or supplies! Contact our office at (802) 472-3285



Jared and Connor outside the Hall

Photo by Karen Cowen



Tom, Neil, Kei and Glen - Hamming it up in the Hall!

Photo by Catherine Dodge Smith



Tom Meskell leads a lantern making workshop in the Flex Space

Photo by Teresa Yasuda



Our new co-workers hanging out at the hall. (Clockwise from left) Ver, Lara, Julia, Minsung, Jan, and Derek



Don Jamison leads group singing in the Hall!

Photo by Catherine Dodge Smith

Center in Action!



Emily, Kaylin, Amelie and Gabby

Photo by Catherine Dodge Smith

Heartbeet's FFE Wish List Fixtures, Furniture, Equipment

Kitchen

- An Industrial Mixer
- Food Processors
- Kitchen Utensils
- Pots & Pans

Library

- Bookshelves
- Tables
- Chairs

The Hall

- Stage Lights
- Projector
- Projector Screen
- Large Carpets

...and more! We need your help to take the next step in making our Community Center a functional inclusive space for all!



Eva and Onat serve up a community meal for conference participants - We look forward to more meals together in this space!

Photo by Catherine Dodge Smith



Volunteers from Sterling College work with Jonathan and Jon on the Hall landscaping



Night falls on Heartbeet Lifesharing, but the Community Center is aglow with warmth and light!

Photo by Catherine Dodge Smith



Participants of the 3rd Annual Camphill Conference at Heartbeet Lifesharing

Photo by Catherine Dodge Smith

Welcome – Ben Jenkins

Ben Jenkins co-founded and managed a successful screen printing and apparel business for ten years. Ben also has experience in commercial greenhouse management, biodynamic farming methods, and plant-based medicine. He is active in his community and volunteers at Habitat for Humanity and the Good Samaritan Haven homeless shelter in Barre. He enjoys his time in Vermont by snowboarding, hiking, swimming and playing sports. Ben feels privileged and honored to be a part of the Heartbeet Community. Ben will be providing full time day support to Heartbeet and feels privileged and honored to be part of the community.

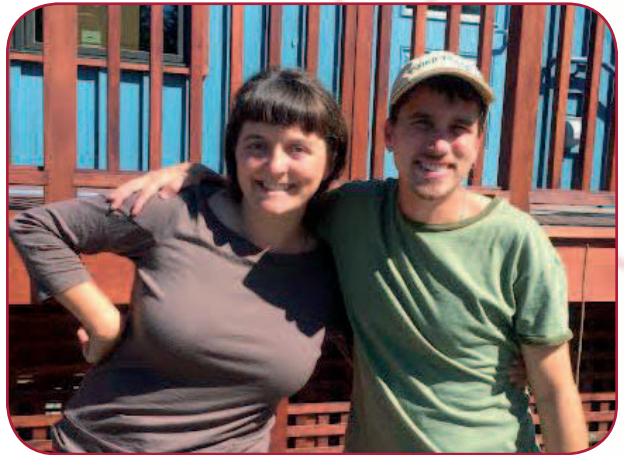


Ben and Mandy outside the Community Center

Welcome Ceilidh Galloway-Kane

Ceilidh Galloway-Kane is thrilled to be joining the Heartbeet Community as the Community Center Coordinator. She grew up in East Hardwick and received a degree in Art History from Smith College in Western Massachusetts. Since then, she has worked at non-profits such as the Children's Museum & Theater of Maine and Catamount Arts in St. Johnsbury. In addition to being the Community Center Coordinator at Heartbeet Ceilidh is also the Executive Director of The Art House, an arts non-profit in Craftsbury, Vermont. Ceilidh looks forward to presenting cultural and inclusive experiences at the Heartbeet Community Center to both Heartbeet and the greater community.

Please join us as we extend our warmest Heartbeet welcome to Ceilidh!



Ceilidh and Connor - Having Fun!

Reflection – Jon Flint

On September 29th, 2016 I felt fulfilled after a three year journey at Heartbeet. When I first stepped foot on the land, I wanted to walk a trail that would lead me to a mountain top view worthy of the highest Vermont peak. It was never easy, and the trail was not always marked. But today I looked out on a panoramic scene of human connection, the beauty of the human potential flourishing, the ideal of dignity for all human beings transforming an historic farmstead to an inclusive community - the best that Vermont could offer to anyone. As I put the last of my things in the car and closed the trunk, my feeling of gratitude to the Friends, coworkers, volunteers, families, and broader community was tremendous. I am honored to have grown with you all.



Jon and Parker

Reflection – Rachel Dripps

Heartbeet has been my home for a whirlwind 3.8 years. It has been a wild ride of amazing and challenging moments, times of growth and change. As I look back on my time at Heartbeet there are so many memories. I was fortunate to have the opportunity to live in several different houses; Kaspar House, Amber Rose, and finally Konig House. This allowed me the opportunity to meet and connect with so many people throughout the community, and to experience the variety that community life can bring. I greatly appreciated all the time I spent walking with Sean. It was a nice circle to have moved in with him in Kaspar house when I first arrived and then to have supported him in Konig house as I made my exit. Also, can't forget about house shopping with Kei. Any excuse to get an ice cream bar!



Rachel, Brittany, Kei, Jon and Connor

Of course Heartbeet is the place where I met Jon, and the place where we got engaged. As we move on to our future, Heartbeet will always hold a special place in our hearts. After a three week road trip we continue on this fall to Camphill California where I will work part time. I will also be taking the GRE and pursuing a master's degree in Psychology, and we will be planning a wedding!

We are looking forward to this new opportunity to connect with another Camphill community, and to seeing what is in store—thank you to all at Heartbeet and the extended community for sharing and enriching this time in our lives.



Thank-you Rachel and Jon - We will miss you!

A Year in Community – Odile Carroll

Many people who are reading this will know just how difficult it is to encapsulate an entire year of the growth, enlightenment, and love you have experienced at Heartbeet into a single statement. Each and every person at Heartbeet has been a teacher to me in some way or another. However, I don't think it was until "my" Konig House constellation started changing at the end of my year that I even realized the extent of my house's importance in my experience at Heartbeet, so I wanted to hold this particular constellation for a moment in my reflection—I love you all. To Kaylin, Patrick, Alden, Amelie, John, Connor, Eva, Mandy, Suzannah and Brittany: I consider myself so lucky to have shared a home with you all this year.

Brittany, thank you for teaching me the beauty of humility and pure, joyful love. Connor, thank you for always wanting to believe in the good. Suzannah, thank you for your enthusiasm and hard work. Mandy, thank you for our conversations and the opportunity to learn how to hold myself accountable to you and everyone else I worked with. John, thank you for your humor, even in the darkest of times, and your compassion and safety. Eva, thank you for your breath of knowledge and limitless sage advice. Patrick, thank you for your inspiring thoughtfulness in how you interact with the world around you. Kaylin, thank you for being the rock that held it all together and for fighting for the people you love—I saw you every single day. Alden, thank for your joy and brilliance and questions, and Amelie, for the journey your parents are embarking on with a daughter—I am so excited to know you!

I am thankful for the individual interactions that taught me so much, and grateful to Heartbeet for making the world feel so big and possible—even in a little community in rural Vermont. I will carry you all with me in whatever my next step may be—your love will make the GRE a little more palatable! I know that as I go forward I will continue to look for the best in people and seek the quality of experience I had at Heartbeet.



Brittany and Odile

A Year at Heartbeet – John Hall

It has been a little over six weeks since I wrapped up my year's stay there at Heartbeet. I began my co-worker stint two Julys ago with forty-four years under my belt, not a few incredible experiences during those years, and probably unreasonably high expectations for my year in Vermont. And yet the community afforded me an opportunity which, incredibly, exceeded all of my expectations. I cannot be too grateful for that opportunity. It is easy now to feel overwhelmed with such distinct memories as fresh granola, Monday mornings in the yurt, laughing with the Shepherds' cast during rehearsals, icing up the barn's floor with inadvertent water spills in February, singing with and to the animals at Christmas, unexpected but expectedly great samples of home cooking (I am looking at you, Patrick), movie nights (except when we watched Frozen and Anastasia. Ugh.), and so many, many early mornings walking down to the barn. And these are only a few of the rich and still vivid memories from my year. I remember laughing and crying and complaining and rejoicing. This community is composed of so many passionate and attentive

and thoughtful and vulnerable and inspiring and brave individuals. I was welcomed by each of them, and made to feel an important and integral part of their collective lives. Thank you. Especially you, Konig House. I heartily recommend sharing a year of your life 3.3 miles north of Hardwick VT, and am happy to speak with anyone at any time about my experiences there. (Cell: [505-795-1385](tel:505-795-1385)) If you are unable to make your way out there, well, may it only be because you have found something else to do that is comparably rich and rewarding.



John with Mandy



Josiah getting into the Fall spirit!



Suzannah, Chris, Hannah and April



Andy and the garden crew during the harvest

Mission:

Heartbeet is a vibrant lifesharing community that includes adults with developmental disabilities and interweaves the social and agricultural realms for the healing and renewing of our society and the earth. Community members live and work together, in beautiful extended family households, forming a mutually supportive environment that enables each individual to discover and develop his or her unique abilities and potential.

Donations:

Heartbeet Lifesharing – 218 Town Farm Road, Hardwick, VT 05843

Email: info@heartbeet.org – Phone: (802) 472-3285 – Website: www.heartbeet.org

Creative Donations:

Corporate Donations can be supported through business matching grants. If you are giving a donation to Heartbeet, check with your business or corporation to see if they would be willing to match it. If you are thinking of giving money but would like to give it over time, we can organize a pledge donation.

*Heartbeet Lifesharing is an equal opportunity employer and provider. Heartbeet is registered as a 501(c)(3) non-profit corporation and its primary purpose is serving individuals with developmental disabilities. We are a youthful organization with significant capital expenses, so your support is greatly appreciated and can be directed towards the following areas of need: **General Operations or Community Center***



Jon, Max and Adam -
The brothers Gleicher!

Photo by A. Perry Heller